

# GREENDALE

— CARPETS & FLOORING —

## ROWALLANE AXMINSTER

### Colours



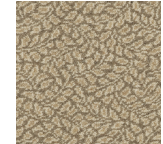
BEECH STRIPE



CHAGA



CHESTNUT  
STRIPE



CINNAMON  
FERN



GOLDEN  
FIRECRACKER



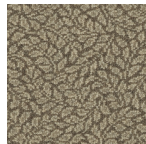
HAUSA



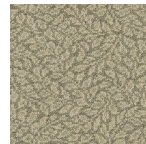
HIMBA



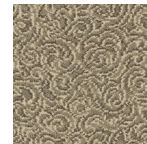
MAASI



MUSHROOM  
FERN



SWORD FERN



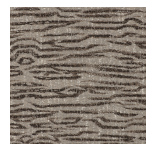
TAUPE  
FIRECRACKER



WALNUT STRIPE



YORUBA



ZULU

### Specification

Pile Content	<b>100% WOOL WOVEN AXM</b>
Backing	<b>WOVEN</b>
Tog Rating	<b>1.7</b>
Pile Weight	<b>1358GM SQM/40OZ SQYD</b>
Widths	<b>0.91 and 1.83 and 2.74 and 3.66 and 4.57 Metres</b>
Suitability	<b>HEAVY DOMESTIC</b>

Colours may vary, please visit your local Greendale retailer for samples.  
Not all colours in the range may be shown.

# GREENDALE

— CARPETS & FLOORING —



Greendale Carpets & Floorings  
Greendale House, Whitestone Business Park  
Hereford, HR1 3SE

Phone 01432 852000  
Email [info@greendalecarpets.co.uk](mailto:info@greendalecarpets.co.uk)  
Website [www.greendalecarpets.co.uk](http://www.greendalecarpets.co.uk)