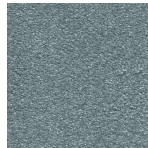


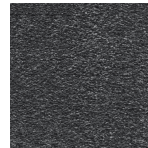
# GREENDALE

— CARPETS & FLOORING —

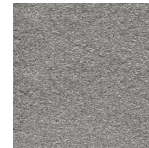
## COPENHAGEN SUPREME Colours



AQUA



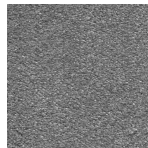
CARBON



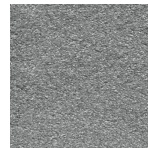
COBWEB



CREME BRULEE



DUST



FOGGY DAY



LIGHT GREEN



MISTY SKY



MOLESKIN



NICKEL



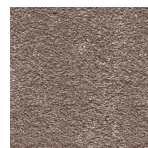
NUGGET



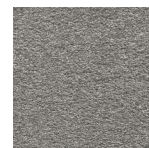
OLD SPICE



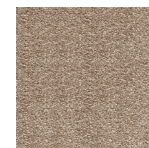
PARCHMENT



PEAT



PLATINUM



RYE



SHIMMERING SANDS



SILK



TWINE



VANILLA

## Specification

|              |                                      |
|--------------|--------------------------------------|
| Pile Content | <b>100% POLYPROPYLENE</b>            |
| Backing      | <b>FUSION BAC</b>                    |
| Gauge        | <b>1/8TH</b>                         |
| Tog Rating   | <b>1.55</b>                          |
| Pile Weight  | <b>2370GM SQM/70OZ SQYD</b>          |
| Widths       | <b>3.00 and 4.00 and 5.00 Metres</b> |
| Suitability  | <b>HEAVY DOMESTIC</b>                |

Colours may vary, please visit your local Greendale retailer for samples.  
Not all colours in the range may be shown.

# GREENDALE

— CARPETS & FLOORING —



Greendale Carpets & Floorings  
Greendale House, Whitestone Business Park  
Hereford, HR1 3SE

Phone 01432 852000  
Email [info@greendalecarpets.co.uk](mailto:info@greendalecarpets.co.uk)  
Website [www.greendalecarpets.co.uk](http://www.greendalecarpets.co.uk)